

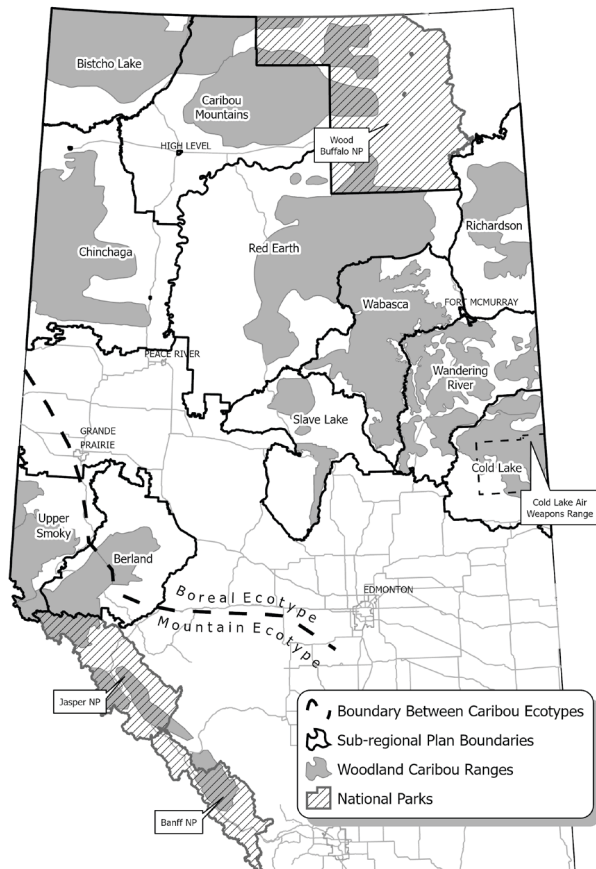
Sub-regional Planning Fact Sheet

What is Sub-Regional Planning?

Alberta's sub-regional plans continue to be a key component of the province's Crown land management. The Government of Alberta has identified land use planning as a priority, and the province remains committed to moving forward on developing and implementing plans.

Sub-regional plans in the areas shown on the map below help enable caribou recovery while maintaining a working landscape and supporting a broad range of land uses and values including conservation, Indigenous traditional land use, recreation and economic development. They provide place-based direction to support regulatory certainty. Comprehensive socio-economic assessments are completed to understand potential impacts and opportunities of a sub-regional plan for each unique sub-region.

Map: Alberta's Sub-regional planning areas and woodland caribou ranges.



In October 2020, Alberta and Canada signed the Agreement for the Conservation and Recovery of the Woodland Caribou in Alberta (section 11 agreement) under section 11 of the *Species at Risk Act* (SARA). By implementing the section 11 agreement and advancing sub-regional plans, Alberta has taken a leadership role on caribou recovery in alignment with the province's authority for management of provincial Crown land.

The Bistcho Lake and Cold Lake Sub-Regional Plans

The Bistcho Lake and Cold Lake Sub-regional task forces completed their recommendations in Spring of 2020. The final sub-regional plans were publicly released in April 2022.

The objectives and outcomes of the Bistcho Lake and Cold Lake Sub-regional Plans are:

- Support economic opportunities that provide benefits to local municipalities, Indigenous peoples, and all of Alberta;
- Consolidate the footprint of economic development over time to support the integrity of the landscape and naturally self-sustaining plant and wildlife populations, with a focus on species at risk; and,
- Support recreational, cultural, and traditional land use in the sub-region for the benefit of local peoples and all Albertans.

In addition to these outcomes, the sub-regional plans meet the objectives of the federal Recovery Strategy for the Woodland Caribou (*Rangifer tarandus caribou*), Boreal Population, in Canada. Management actions identified in the sub-regional plans outline how Alberta will achieve these objectives over the next 50 to 100 years.

We want to hear from you

Public feedback will be reviewed and incorporated prior to finalization of the regulatory details and LARP amendments required to support the Bistcho Lake and Cold Lake Sub-regional Plan.

Please visit:

<https://www.alberta.ca/sub-regional-planning-engagements>
or email us at SRPRegDetailsLARP@gov.ab.ca